

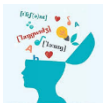
Programme of Study – History

How were people ruled? – Students will study how power has been distributed from pre-history to the modern day and evaluate change and continuity thereof.

How did people live? – Students will study how people lived in past societies and compare similarities and difference.

What did people believe? – Students will study the impact that religion has had on society from pre-history through to the modern day

How do we know about it? – Students will study the three themes above through the interrogation of complex source and interpretation work.



Year	9					
Rationale/narrative	<p>During this course students will be following the Edexcel GCSE specification. They will begin by studying Medicine through time, 1250-present. This module analyses change and continuity in medicine throughout history from the medieval period to the modern period. Next, students will begin studying Early Elizabethan England, 1558-1588. This part of the course fulfils the first element of Paper 2 and analyses topics such as Elizabeth’s Religious Settlement, Mary Queen of Scots, revolts against her rule, as well as looking at social issues such as education and vagrancy. Students will then finish the year by completing the Historic Environment aspect of Paper 1: The British Sector on the Western Front, 1914-1918</p>					
	Autumn 1	Autumn 2	Spring 1	Spring 2	Summer 1	Summer 2
Topic	Medieval Medicine, 1250-1500	Renaissance Medicine, 1500-1750	Elizabeth’s problems and Religious Settlement	Industrial Medicine, 1750-1900	Mary Queen of Scots/The Armada/Colonisation, Medicine on the Western Front	Modern Medicine and Elizabethan Society
Content	Ancient Medicine The role of the church The Black Death – causes, prevention and treatment	Royal Society Thomas Sydenham Vesalius William Harvey The Great Plague	Elizabeth’s government Elizabeth’s problems Protestants and Catholics The Religious Settlement	Edward Jenner Pasteur’s germ theory Robert Koch Florence Nightingale John Snow Simpson and Lister (surgery) Bazalgette Chadwick and the public health acts	Mary Queen of Scots Plots against Elizabeth England and Spain at war Exploration and colonisation Trenches, weapons, injuries, evacuation routes and	Penicillin Magic bullets NHS Lifestyle campaigns Impact of lung cancer Elizabethan society Pastimes Education Theatres Poverty

History Helpdesk

Welcome to the History Helpdesk. Please follow the link in the solution section below to access the resources.

The areas for development are:	Solution
Elizabeth I	https://www.bbc.co.uk/bitesize/examspecs/zw4bv4j https://www.historylearningsite.co.uk/tudor-england/mary-queen-of-scots/ https://www.bbc.com/bitesize/guides/zgw3wxs/revision/3 http://www.elizabethan-era.org.uk/the-age-of-exploration.htm
Medicine Through Time	http://mrbright.uk/Revisionguides2018/Paper%201%20-%20Medicine%20Through%20Time%20-%20Revision%20Book.pdf
Industrial Medicine	https://www.bbc.com/bitesize/guides/zxjgqty/revision/1 https://www.bbc.com/bitesize/guides/ztpw4j6/revision/1